

**aseke® TRANSPORT CHAIN APPLICATIONS GRADE 80**

PRODUCED ON GERMAN 'WAFIOS' FULLY-AUTOMATIC CUTTING, BENDING AND WELDING MACHINES
CERTIFIED TO EN-10204 3.1 (CHEMICAL AND MECHANICAL PROPERTIES)

SHORT LINK

EN 818-2 BLACK ELECTROPHORETIC SURFACE WITH YELLOW PAINTED HOOKS EK-12 BOTH ENDS (Catalog page 14A)
ACC TO EN 12195-3

6,2 MM DIA		CA	MBL	TEST LOAD	PIECES
ITEM NO	LENGTH	KG	KG	KG	PER BAG
921406	6 M	5,2	4500	2200	2

8 MM DIA		CA	MBL	TEST LOAD	PIECES
ITEM NO	LENGTH	KG	KG	KG	PER BAG
921503	3 M	4,9	8200	4100	2
921504	4 M	6,3	8200	4100	1
921506	6 M	0,0	8200	4100	1
921508	8 M	11,8	8200	4100	1

10 MM DIA		CA	MBL	TEST LOAD	PIECES
ITEM NO	LENGTH	KG	KG	KG	PER BAG
921602	2 M	6,1	12800	6400	2
921603	3 M	8,3	12800	6400	1
921604	4 M	10,5	12800	6400	1
921606	6 M	15,0	12800	6400	1
921608	8 M	19,4	12800	6400	1

13 MM DIA		CA	MBL	TEST LOAD	PIECES
ITEM NO	LENGTH	KG	KG	KG	PER BAG
921702	2 M	10,6	21800	10900	1
921704	4 M	18,0	21800	10900	1
921706	6 M	25,5	21800	10900	1
921708	8 M	33,1	21800	10900	1

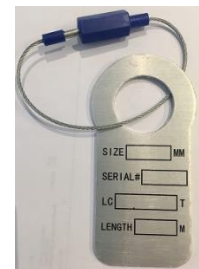
**LONG LINK**

DIN 763 BLUE PAINTED WITH BLUE PAINTED C-HOOKS EK-71 BOTH ENDS (Catalog page 14A)

11 MM DIA		CA	MBL	TEST LOAD	PIECES
ITEM NO	LENGTH	KG	KG	KG	PER BAG
922706	6 M	13,7	15700	7850	1
922708	8 M	17,9	15700	7850	1

**SEPARATE MARKING TAGS WITH LOCKING WIRE FOR LASHING APPLICATIONS**

ITEM NO		PIECES PER BAG
M 9	MARKING TAG	10
M 3	LOCKING WIRE	10



WE ASSEMBLE LASHING APPLICATIONS AT OUR WAREHOUSE - PLEASE INQUIRE