



User Manual for Eye Bolts DIN 580 & Eye Nuts DIN 582

(Hot dip galvanized or Stainless AISI 316)

Anyone who uses lifting applications and lifting equipment must have the required training and knowledge for safe use. The user must also be able to understand the dangers associated with the use of the equipment. Maintenance and control of the equipment should be conducted at a minimum once a year by a certified organization.

Products included in this user manual:

HDG



DIN 580

DIN 582

AISI 316



DIN 580

DIN 582

Check before use:

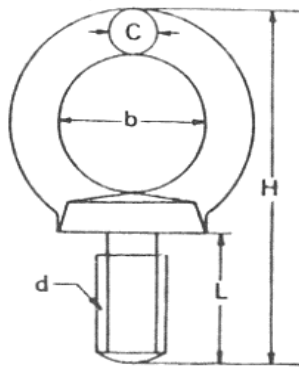
1. Eye bolts –and nuts must be marked with CE, Manufacturer and Charge number (ID code marking) and WLL.
2. Bolts/nuts must not have visible deformations, notches, cracks, or corrosion that impair its properties.
3. Check whether the bolts/nuts have heat damage or welding spatter.
4. When installing bolts/nuts, the lifting table (next page) must be used and followed.
5. Make sure that the bolts are fitted with the entire threaded section in good condition before lifting.
6. Eye bolts –and nuts must always be mounted so that the load comes at 90 degrees in relation to the lifting eye (no lateral load).

Table for lifting with 1 eye bolt/nut with safety factor 4:1 at 90°

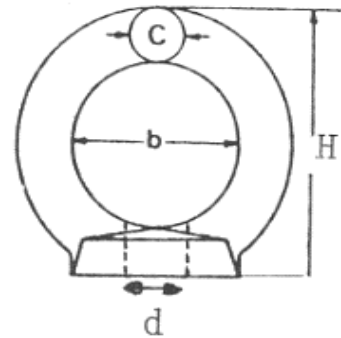
Eye bolt/nut	M6	M8	M10	M12	M14	M16	M18	M20	M22	M24	M30	M36
WLL (Tons)	0,09	0,14	0,23	0,34	0,49	0,70	0,93	1,20	1,50	1,80	3,60	5,10

Table for lifting with 2 eye bolts/nuts with safety factor 4:1 at 45°

Eye bolt/nut	M8	M10	M12	M14	M16	M18	M20	M22	M24	M30	M36
WLL (Tons)	0,095	0,17	0,24	0,34	0,50	0,65	0,83	1,05	1,26	2,60	3,70



DIN 580



DIN 582

d	H	b	C	L	WLL 4:1
M 6	47	16	6	13	0,09T
M 8	49	20	8	13	0,14T
M 10	62	25	10	17	0,23T
M 12	73	30	12	21	0,34T
M 14	89	35	14	27	0,5T
M 16	89	35	14	27	0,7T
M 18	101	40	16	30	0,93T
M 20	101	40	16	30	1,2T
M 22	126	50	20	36	1,5T
M 24	126	50	20	36	1,8T
M 30	154	60	24	45	3,6T
M 36	182	70	28	54	5,1T

d	H	b	C	WLL 4:1
M 6	34	20	6	0,09T
M 8	36	20	8	0,14T
M 10	45	25	10	0,23T
M 12	53	30	12	0,34T
M 14	62	35	14	0,5T
M 16	62	35	14	0,7T
M 20	71	40	16	1,2T
M 24	90	50	20	1,8T
M 30	109	60	24	3,6T
M 36	128	70	28	5,1T

To ensure safe use:

- Never stand under suspended load.
- The maximum allowed working load limit must NEVER be exceeded.
- Never use the bolts in temperatures above +250 C° or below -40 C°

Maintenance and control after use

- The bolts/nuts must be checked after use for damages, wear, and deformations. Check that the threads are still full and have not been worn down.
- The bolts/nuts must be painted with the discard colour white and be replaced by a new item if any damages are detected.
- The bolts/nuts should be stored in a dry place.

If you have any questions about this user manual or the product, please contact us at aseke on

TLF: +47 22 13 02 00 E-mail: post@aseke.no